

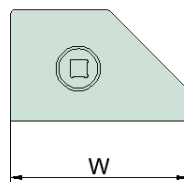
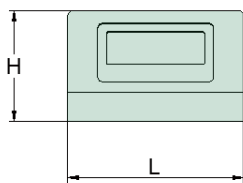
NEW
PRODUCT
2020



TES Series Torque Tester

Designed for calibration or inspection of torque wrenches at the production site.

- Accuracy: $\pm 1\%$ from 10% to 100% of capacity.
- 4 Units: Nm, Kgcm, Lbft, Lbin.
- Three test mode: First Peak, Peak and Track.
- Peak value hold function for First Peak and Peak mode.
- Three-color light and buzzer will alarm when the torque reaches the set value.
- Torque error percentage display function, saves the operator from tedious calculations.
- Backlight optional, good for low light conditions.
- Memory function: Store 1500 sets of data as required, each set include time, unit, and value.
- Battery capacity display.
- Micro-USB port for charging and uploading data to computer.
- Built-in rechargeable lithium battery, easy to charge by connecting the power adapter.
- Four bolts are designed at the bottom for fixing the tester on a workbench or other floor.
- Automatic shutdown after 10 minutes of non-use.



Item No.	Square Drive	Torque Range		Length (L) mm	Width (W) mm	Height (H) mm	Weight kg
		N.m	Lb.ft				
TES112	1/4"	1.2-12	10.6-106.2*	135	136	85	2.2
TES225	3/8"	2.5-25	1.8-18	135	136	85	2.4
TES240	3/8"	4.0-40	3.0-30	135	136	85	2.6
TES275	3/8"	7.5-75	5.5-55	135	136	85	2.8
TES3150	1/2"	15-150	11-110	135	136	85	2.9
TES3250	1/2"	25-250	18.4-184	135	136	85	3.1
TES3400	1/2"	40-400	29.5-295	135	136	85	3.2
TES4650	3/4"	65-650	48-480	135	136	85	3.2
TES41100	3/4"	110-1100	81.1-811	135	136	85	3.4

*Unit is Lb.in